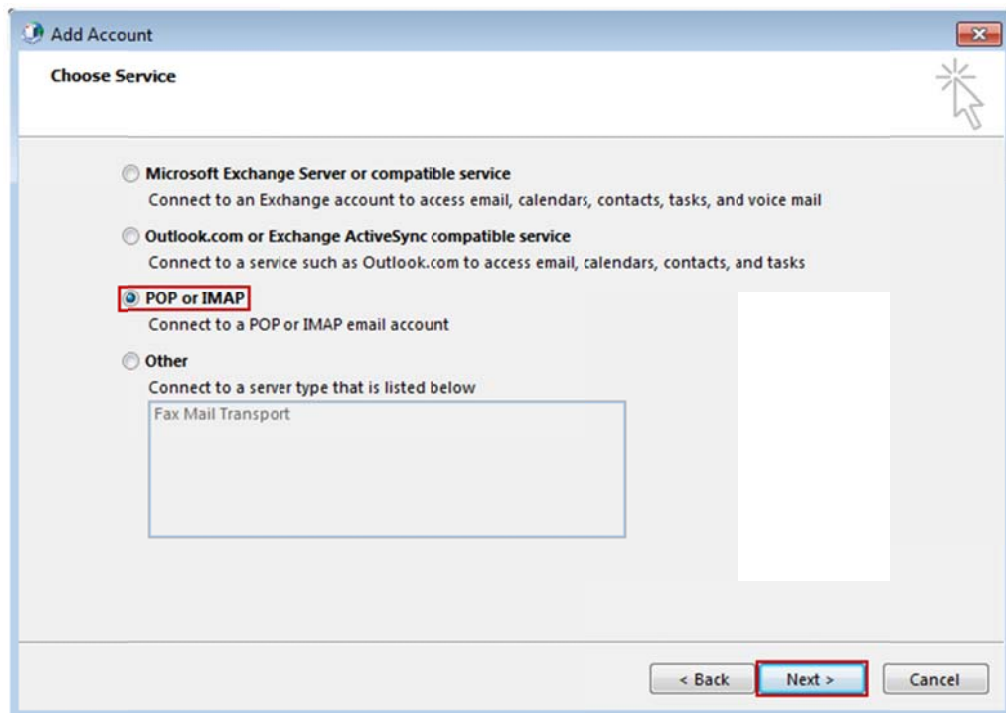


# Windows: Outlook 2007 (POP)

This article will assist you with setting up Outlook 2007, using POP, with your Hosted Mailbox.

1. Windows 7: Start Menu -> Search. (Search for "Mail")  
Windows 8: Open the "Charms" by moving your mouse to the top right of your screen. Select Search.  
(Search for "Mail")
2. On the left side of the screen click on "Mail". Click on "Show Profiles" Then Click on "Add".
3. The Profile Name can be anything you would like. Click "OK" and select "Manually configure server settings or additional server types". Click "Next".
4. Select "Manual setup or additional server types". Click "Next". Select "POP or IMAP" and click "Next".



5. In the "Add New Account" window, input the following information:
  - a. "Your Name": The name email recipients will see in the "From" field.
  - b. "Email Address": **XXXXXXX@salishmail.com**
    - (Replace XXXXXX with your mailbox name)
  - c. "Account Type": POP
    - a. "Incoming mail server": (We recommend secure.emailsrvr.com)

Server	SSL	Port(s)
secure.emailsrvr.com	Yes	995
pop.emailsrvr.com	No	110

- b. "Outgoing mail server (SMTP)": (We recommend secure.emailsrvr.com)

Server	SSL	Port(s)
secure.emailsrvr.com	Yes	465
smtp.emailsrvr.com	No	25 or 2525 or 587 or 8025

6. "Logon Information":
  - a. "Username": **XXXXXX@salishmail.com**
    - (Should be the same as 5.b. above)
  - b. "Password": Your mailbox password

**Add New Account**

**Internet E-mail Settings**  
Each of these settings are required to get your e-mail account working.

**User Information**

Your Name:

E-mail Address:

**Server Information**

Account Type:

Incoming mail server:

Outgoing mail server (SMTP):

**Logon Information**

User Name:

Password:

Remember password

Require logon using Secure Password Authentication (SPA)

**Test Account Settings**

After filling out the information on this screen, we recommend you test your account by clicking the button below. (Requires network connection)

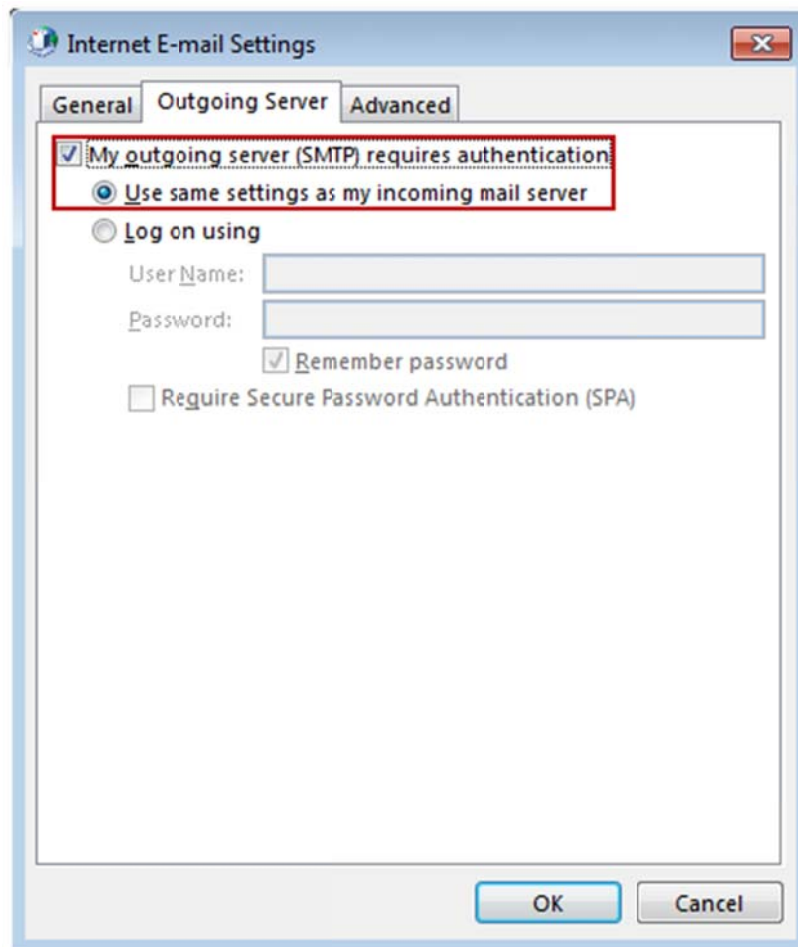
Test Account Settings by clicking the Next button

**Deliver new messages to:**

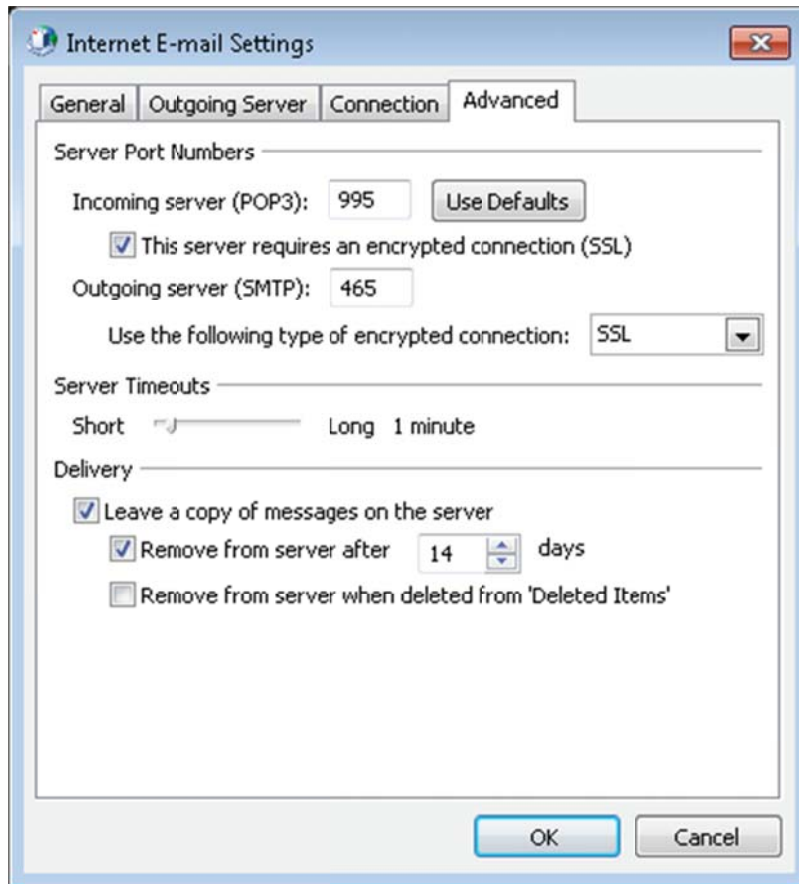
New Outlook Data File

Existing Outlook Data File

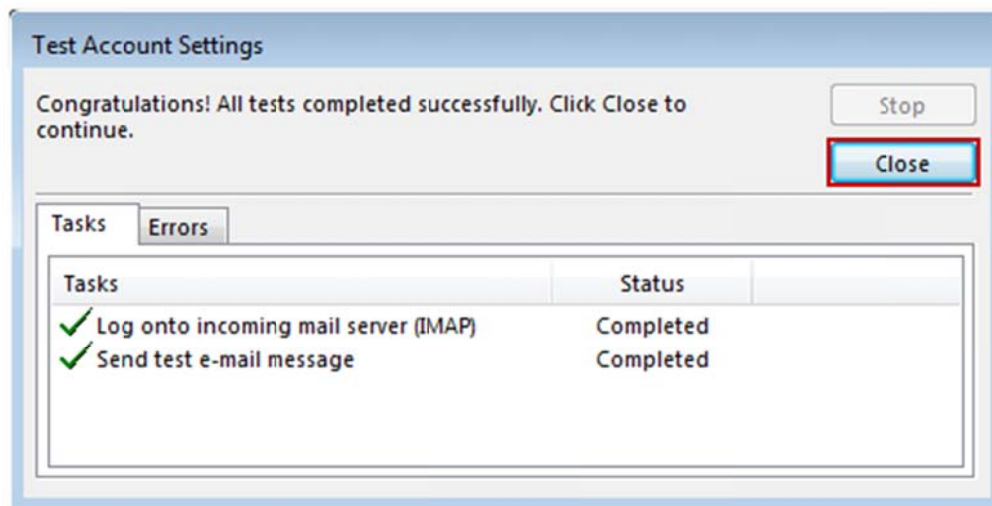
7. Click on "**More Settings**" then click the "**Outgoing Server**" Tab
  - a. Check the box for "**My outgoing server (SMTP) requires authentication**".
  - b. Check the button for "**Use same settings as my incoming mail server**".



8. If using "**secure.emailsrvr.com**": Click on the "**Advanced**" Tab
  - a. Change "**Use the following type of encrypted connection**" to "**SSL**".
  - b. Change the port numbers to match the chart on step 4.c. Click "**OK**".



9. Click "**Next**". Outlook will now attempt to send a test message using the settings we have just put in. If everything was entered correctly, the message will send out successfully.



10. Congratulations! You have now setup Outlook to work with your Mailbox!